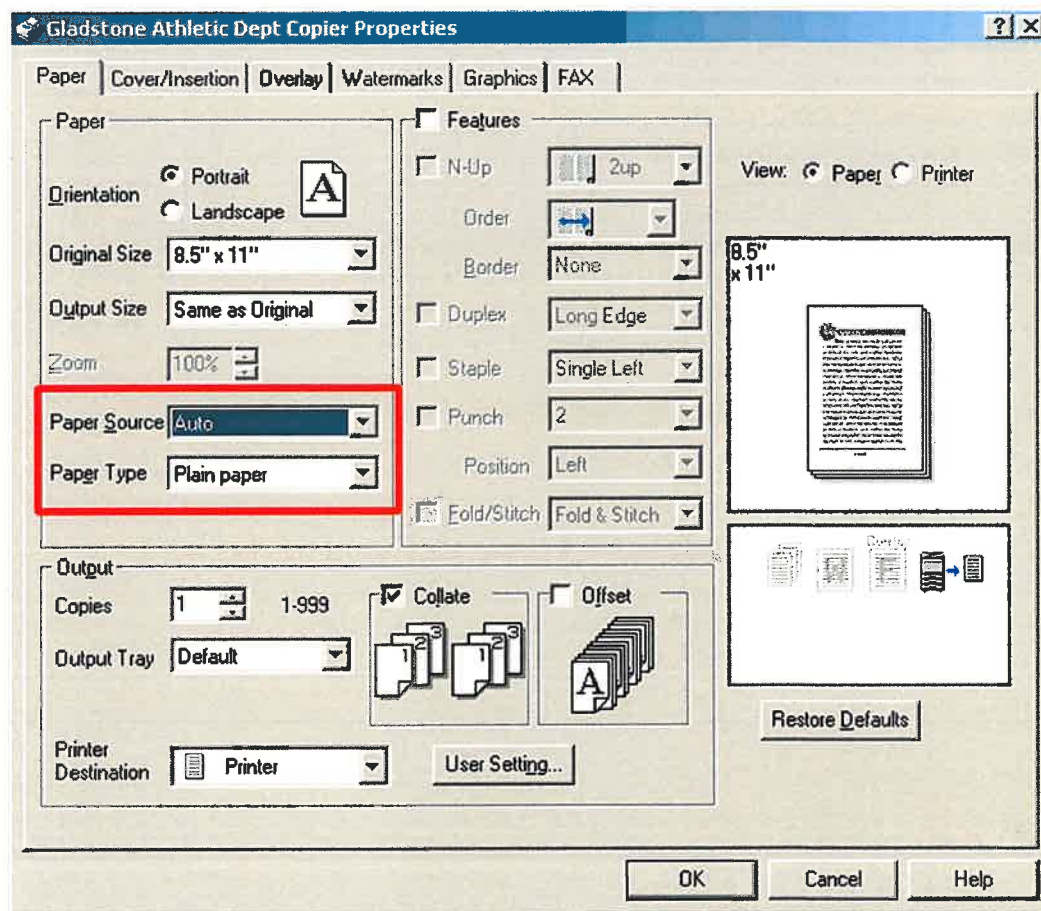


Paper Types and Sources

This copier has the capability to print to many types of media located in any of the numerous paper sources equipped on each model. The paper source settings in the print driver must match those onboard the copier in order to successfully print.

The driver is set by default to automatically choose the drawer of the copier that best matches the job that is output from the copier.

It is possible to override these default settings, forcing the copier to print the job exactly how you tell it. Manually forcing a job to print to a specific tray and specific paper type and size could result in the copier being unable to print your job. To prevent this, make sure the paper size, type, and source all match the settings on the copier, or use the auto setting.



Choose the paper type and source from the dropdown menus as shown above. Make sure that any changes you make at the driver match the configuration at the machine or it may fail to print.